

**TERRA-HAMMER TR 565 rams underneath the railway**

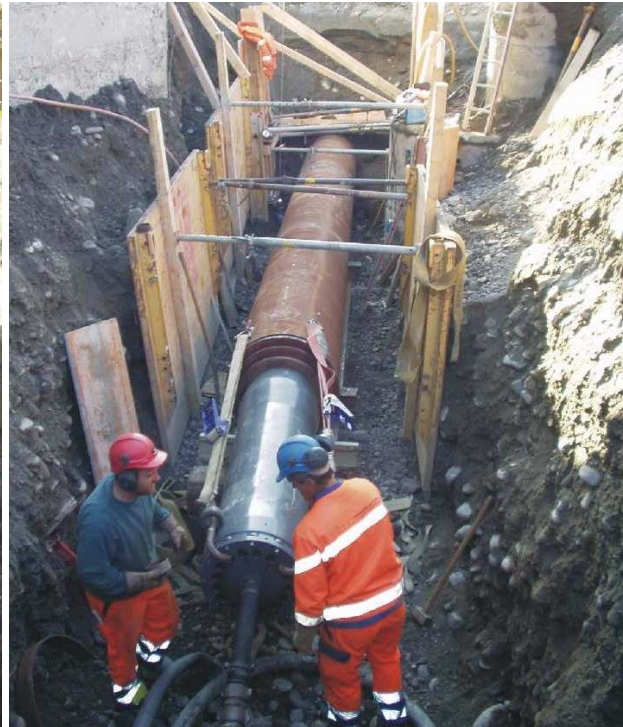
City: Wilderswil / Switzerland  
Project: steel pipe ramming Ø 800 mm (32") underneath the railway as a chasing for a distance heating pipe  
Contractor: Friedrich Witschi AG / Switzerland  
Length: 30 m (100 ft)  
Steel Pipe: Ø 800 mm (32")  
Machine: TERRA-HAMMER TR 565  
Ramming speed: 18 m/h (60 ft/h)  
Underground: sand, gravel, bolder



The TERRA-HAMMER TR 565 with assembled ram ring.



The steel pipe Ø 800 mm (32 inch) is adjusted exactly in the ramming pit.



The TERRA-HAMMER TR 565 is connected to the steel pipe with tensioners, ready for ramming.





The ramming was done underneath these two railways of the „Berner-Oberland-Bahnen“ (one of the Swiss regional railways) and underneath the main road between Wengen and Grindelwald.

After the 30 m (100 ft) long ramming the steel pipe  $\varnothing$  800 mm (32 inch) was flushed out by water jetting. The maximum water pressure was 230 bar (3'300 psi), the maximum water volume was 500 ltr/min (130 gpm).



Nobody is allowed to stand in the ramming pit during pipe cleaning by water jetting.